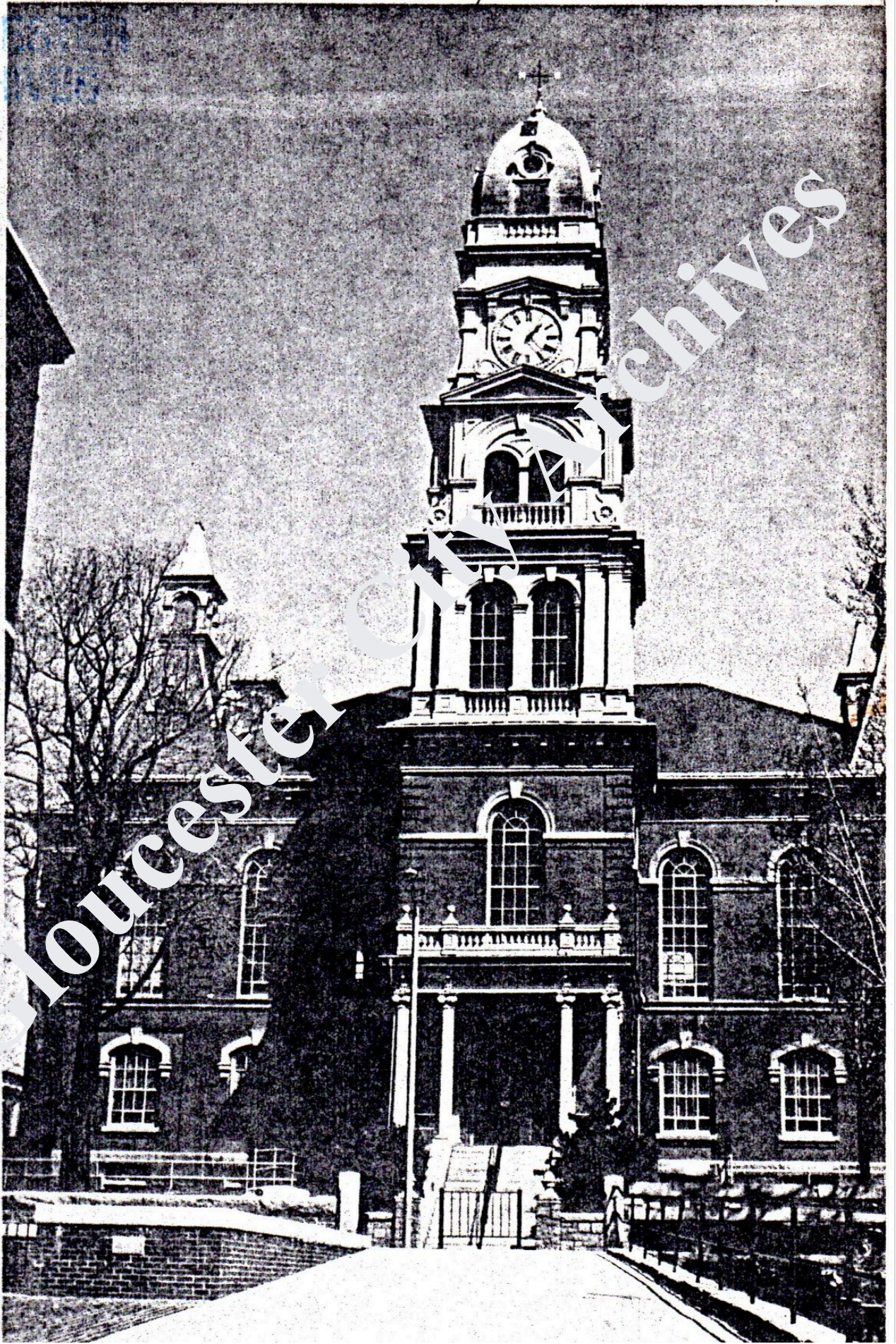


City Hall Plans (Separate)

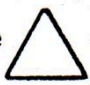
LOUCHESTER  
ARCHIVES





SECTION 6.

OBJECTION IDENTIFICATION

See  on plans dated November 15, 1978

First Floor:

1. Plaque: "Victory leading the People"
2. Plaque: "Spirit of '76"
3. Mural "City Government" by Charles Allan Winter 1937
4. Painting: "City Hall" by Bertha Rafter, 1935
5. Mural: "High School Education" by Charles A. Winter 1935
6. Wood Carving: "Fishing" artist Asiah Christopher Wagner 1917
7. Wood Carving "Fishing" presented to City of Gloucester in memory of the artist, from his daughter Phyllis Wagner Seeley
8. Plaque: "Honor Roll" World War 1, 1917 -1918
9. Bell: Iron bell cast in 1779 by Thomas Rudhall Sent in 1915 by Ex-Mayor of Gloucester, England
10. Clock: Clock presented to the Citizens of Gloucester by Nathaniel Webster, October 19, 1883
11. Mural: "Protection of Fishing" by Charles Allan Winter, 1936
12. Mural: "Poetry" by Charles Allan Winter, 1936
13. Plaque: "Honor Roll" World War 11
14. Plaque: by the Citizens Restoration Committee Leo I. Alper, Mayor

First Floor (cont.)

15. Mural:  
"Landing of the Dorchester Immigrants"  
by Frederick J. Mulhaupt  
Samuel DeChamplain surveying "LeBeauport"
16. Sculpture:  
"Winged Victory" gift from Gloucester  
High School Class, 1905
17. Plaque:  
"Honor Roll" Spanish-American War  
1898 - 1902
18. Painting:  
"Gloucester Waterfront" by Martha Baxter
19. Painting:  
"Five Marines" donated to the City of  
Gloucester by the Cape Ann Detachment  
Marine Corps League

Second Floor:

1. Painting:  
"Gloucester Harbor" by Ed Fish, 1977
2. Painting:  
"Gloucester Beach" by Ed Fish, 1977
3. Wood Carving:  
Present by Mrs. Oliver Wendall Holmes  
in honor of men lost at sea. Plaque  
viewed by Oliver Wendall Holmes on  
his 90 th. birthday in August, 1931

Balcony:

1. Portraits:  
Portraits of Mayors of the City of  
Gloucester from 1874, when it became  
a City, to present - 1978
2. Clock:  
Addison Gilbert's clock Presented by  
Building Committee Chairman, Addison  
Gilbert
3. Mural:  
"Founding of Gloucester", 1623 Painted  
in 1934 by Charles Winter.



TOWER:

1. Bell:

A gift of Samuel E. Sawyer 1870

The inscription reads:

"In the year 1870, Samuel E. Sawyer of Gloucester caused me to be fabricated by Jones & Co. of Troy, N.Y. and generously placed me in this tower and by the clock above also his gift I am made to proclaim each passing hour."

2. Clock:

A gift of Samuel E. Sawyer 1870