

Jane Deering Gallery

19 Pleasant Street . Gloucester MA

Please join us **Thursday evening August 5th . 6-8pm** for the opening of:

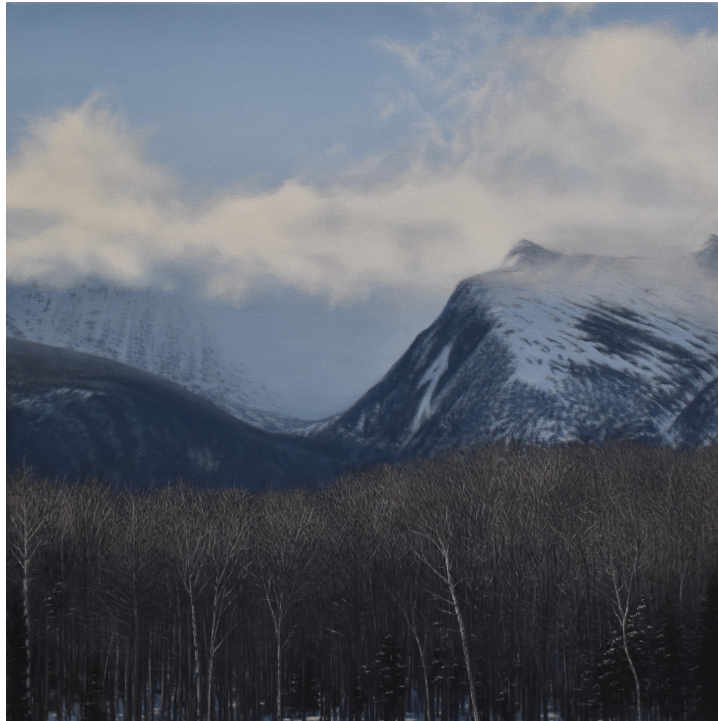
There's a certain slant of light new paintings by Adin Murray



Evening, Mount Washington Valley 2021 . Oil on canvas . 21 x 21 inches

For several years, Adin Murray has studied the play of light on water and sky in a series he titled *Horizon*. For the many who have seen these beautiful paintings, there is endless enchantment, atmosphere and mood in the range of light the artist captures.

In the new paintings, nine of them, he explains — *‘I’ve broadened the scope of my subject matter. Yet my intent remains the same— to showcase the beauty and inspiration that nature provides. Central to this is the play of light across the landscape (and moonscape) — sometimes dramatically illuminating objects, sometimes mingling with the atmosphere, and sometimes there is magic in the shadows. In any instance however, like life, light is always transitional and represents constant change.’*



.Into the Void 2021 . Oil on canvas . 21 x 21 inches



Rock Pool 2021 . Oil on canvas . 18 x 18 inches



Portrait 1 2021 . Oil on canvas .10 x 10 inches

Adin Murray (b.1974) received a BA in Art/Biology from Tulane University and an MFA in painting from the Savannah College of Art and Design. In 2008, he had a first solo exhibition at the Savannah Hilton Head International Airport, and in 2009, his work was shown at the Woodruff Art Center in Atlanta, the Rymer Gallery in Nashville, and the Pei-Ling Chan Gallery in Savannah. His work has been featured in *Faultline*, the University of California, Irvine's literary and art publication; *Southern Living* and *North Shore Magazine*; and the *Boston Globe*. Twenty-five of his graphite drawings are currently on view at the Cape Ann Museum, Gloucester MA in a two-person show titled **Homeport**. His work is in numerous private collections in the US and abroad. Murray maintains a studio on Cape Ann in Massachusetts. This is his third solo show with Jane Deering Gallery.



Boundless 2020 . Oil on canvas . 32 x 48 inches

The exhibition continues through August 29th.
Gallery hours: Thursday 4-8pm . Friday & Saturday 1-5pm . Sunday 1-4pm
and by appointment at 917-902-4359 . info@janedeeringgallery.com



Late Afternoon, Mount Washington 2021 . Oil on canvas . 21 x 21 inches